

**EDITORIAL** The Index for OSN 1-30 & the revised Database are both now available. The Database has 56 pages, too many to staple together easily, so it is in two parts, with the basic alphabetical sort in one and every thing else in the other. For prices please see the Small Ads overleaf (the Database is cheaper than forecast because of an arithmetic misfortune on my part). The basic alphabetical sort of the Database is also now on the web site but I've yet to find a way of printing off the righthand side of the landscape A3 pages on an A4 printer. Expert advice welcome. Still on the Database, if you ordered a copy and haven't received it, please let me know (this time it was a spilt tea misfortune which made part of my list illegible).

My stock of some OSN back numbers has run out, and their replacements will be in the form of loose, double-sided A4 sheets made by scanning the original masters. As explained in 31/939 it is easy to make such sheets into the stapled, folded A3 style, and the quality of the scanned photos is nearly always better than the original photocopies.

I am now using the OpenOffice word processor for OSN, with .sxw ending files. There is no problem about opening WORD files in OpenOffice but OpenOffice users sending me files need no longer save them in WORD format. In passing, for anyone not familiar with OpenOffice, it is a free download suite including a spreadsheet, a drawing tool, etc. My experience of the word processor in producing this Issue is that although not perfect it is overall rather better & easier to use than WORD, especially with regard to graphics.

## Shorter NOTES, with thanks to all contributors.

1. Don Redmond noted a Crank Handle, apparently **VOGUE**, with a diameter of 3.48mm, against the normal  $3.66 \pm 0.01$ . 1 of the 6 to hand here was anomalous at 3.57, and 1 of 6 Axles at 3.76, but I can't guarantee that they are actually genuine VOGUE parts.

### VOGUE: S2

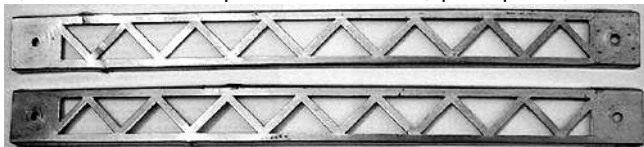
[32/940]

2. Don also wrote of some **MASTER BUILDER** parts, see 16/450. The 25h Angle Girder has 4.3mm holes in each, 15mm wide, arm, and square corners. The 5 & 25h Strips have large-radius ends. The 4h Disc, #19, is  $\frac{3}{4}$ " Ø. All these parts, and a 5\*11h Flanged Plate are tinplate, grey with age, but the Road Wheel, #30 ( $2\frac{3}{4}$ " Ø, not the 3" in the Parts List), is black enamelled, and its 8 face holes are at  $\frac{3}{4}$ " radius.

### MASTER BUILDER: S3

[32/940]

3. Jacques Pitrat sent notes on early 12" **ERECTOR** Girders. The first ones in 1913 (they had edges with narrow flanges rather than the V-formed type introduced in 1914) were handed, as shown in the photo below. Most, perhaps all, handed



ERECTOR parts had separate PNs, but not in this case, and it may be that the handing was not deliberate but depended on how the part was handled in the production process. This could explain why the number of each hand found in lots/sets is never equal. Handed Girders with the new type of edge also

exist, witness those in the 1914 No.1 set on p51 in *Greenberg*, but this is the only example known and those in the 1914 No.7 on p52 are all of the hand seen in all later sets. No doubt a change in the production method eliminated the possibility of handed parts. However this meant that it was not possible to get 'double-bracing' by laying one Girder on top of another of opposite hand (see 15/400). It also meant that 2 sides of a model could not be made to match, in a Bridge for instance, although in most cases this would not matter. Going back to the 1913 parts, double-bracing could be obtained by placing 2 Girders of the same hand with their flat faces together.

### ERECTOR [1 & 2]: S1

[32/940]

4. From John Wapshott. In addition to the parts mentioned in 31/909, John has a Canadian 'Eagle' **LIL'N'GINEER** set (see 27/782). The box measures  $12\frac{1}{4} \times 14\frac{5}{8} \times 2$ " and its lid & model leaflet are as described in OSN 27.

### LIL'N'GINEER: S2

[32/940]

5. Orion DreamDancer wrote that there are two types of 1" x  $\frac{1}{4}$ -20 Bolt in both of his Farmingdale Aircraftmen Mfg. Co. **TECHNICAL TRAINER** sets (see 19/528 & 23/658). They are similar but one has 'STRONGHOLD' across the top of the head in slightly raised letters, and is threaded all the way to the head, while the other head is unmarked and has about  $\frac{3}{16}$ " of the plain shank under it.

Orion also kindly sent an example of the Hook mentioned in 23/658. It is a flat 'S' type, made of 2.7mm Ø dull plated wire, and is 30mm long o/a.

### TECHNICAL TRAINER: S1

[32/940]

6. Werner Sticht has added to his web site about **STABIL**, [www.stabilbaukasten.de.vu](http://www.stabilbaukasten.de.vu), with more on the parts, the Motors, the period 1921-28, the Inventor sets, prices of sets etc in many years to allow precise dating, etc, etc. Werner hopes to add an English version one day.

### STABIL: S2

[32/940]

7. From Don Redmond, about two manuals for the Canadian **YOUNG ENGINEER** system. This system hasn't been mentioned in OSN before but like CONSTRUCTO (see 30/876A, 22/651 & earlier) which succeeded it in 1980, it consisted of 6 sets made up in Canada by Paramount Industries from 1978 to 1980, using MERKUR parts. (Another similar system not previously mentioned is BUILD-O which succeeded or ran alongside CONSTRUCTO in 1981-82.)

The Y E manual covers seen are all like the No.3 shown in MCS (with a Lathe on the front, YOUNG ENGINEERS CONSTRUCTION SET MANUAL above it and MANUEL DE CONSTRUCTION DU JEUNE INGÉNIEUR below— all in B&W but with the outfit number in red). All the models are shown as line drawings with names & numbers. Although the covers are bilingual the model names & notes inside are in English only.

The No.1 has a single sheet inside the covers, 9\*13" in vertical format, folded once to give 4 landscape pages and stapled on the top long side to the matching covers. 37 models are shown but the model numbers are not in sequence, with Nos.1-7 & 12 on the last page.

The No.6 has 11 similarly folded sheets inside the covers with the No.1 sheet the outermost one. Model numbers on the

rest of the sheets run up to 267 but in no apparent order, save that models for the smaller sets are probably on sheets outside those with the larger ones. The largest appear on the 4 sheets in the middle of the manual, and the centre opening pages (there are no page numbers) show models 252-257. No indication is given of the set needed for any of the models.

# YOUNG ENGINEER [1]/LE JEUNE INGÉNIUER: S1 [32/941]

8. Two similar UK **CONSTRUCTO** sets were described in 25/740 and now Jacques Pitrat has send notes and a photo (below) of one he has found. It is virtually identical, with the same manual, but it is complete with N&B, in the two little green boxes, and with the Brackets, Axles & Tools, in a plastic bag between one of the pairs of Flanged Sector Plates in the centre section of the box. The N&B boxes have UMAKIT on them, which confirms that the two systems came from the same manufacturer. As before there is no Set No. on the box but Jacques points out that one can build all the Set 4 manual models with the parts in the Outfit, and on the contrary, there are not enough Strips & Flexible Plates for those from Set 5. For instance, some require 9x5h Flexible Plates and there are none in the Set. One curious thing is that there are 6 Flanged Sector Plates (against 4 in the OSN 25 sets), and that no more than two are used in any of the manual models.



Another similar set has been seen on Ebay. It is far from complete but it does include at least three 5\*9h Flexible Plates as well as examples of the sizes in Jacques' set. No balloon type Road Wheels can be seen but instead the 5 Pulleys fitted with Tyres left. The 3 smaller ones are about the diameter of those in one of the OSN 25 sets but their 1" Pulleys looks like the 6-hole type shown in 19/539. The larger ones scale at 2" Ø overall, or a little less, and have rather deeper Tyres fitted to larger Pulleys, similar in style to the 1" but with more holes, probably 8. Again there are 2 green boxes - the printing on them that can't be read but the main name doesn't look like UMAKIT, and is the right length for CONSTRUCTO. So was this a larger and perhaps later set than any of the 'No.4s'?



# CONSTRUCTO [2]: S1

[32/941]

9. **Snippet - WERNER'S Metallbaukasten** This system was mentioned in 17/477 as being like TRIX and dating from soon after WW2. The Ebay picture heading the the next column shows parts that indeed look identical to TRIX and if the orangey look to a few of them is rust, then they are no doubt made of steel.

The words under the name on the box lid are 'Nr.1 Grundkasten Made in Germany'. The parts may be like Trix



but what of the models? I don't remember the Tractor on the lid as a TRIX model.

# WERNER'S Metallbaukasten: S1

[32/941]

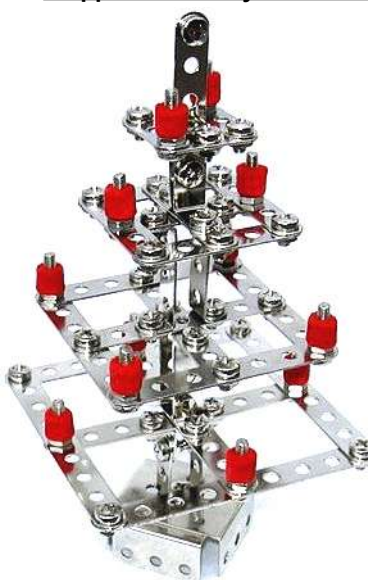
10. **'New' System: MACHINO.** I have a note that this was an Indian system, and that a No.0 set had red & green parts strung to a backing card. I can't trace who sent me this information, so apologies to whoever it was.

# MACHINO: S1

[32/941]

# 11 Snippet – New System: STABILUS

Just one set with this name was offered for Xmas 2003 by [www. Blechspielzeugladen.de](http://www.Blechspielzeugladen.de) to make the 17cm high Xmas Tree on the left. It is still available from the same site, price €12.50. At first I thought of the BRAL model (29/857) but from the dimensions given, 12cm across the diagonal of the lowest square, the hole pitch must be about 10mm. The parts could easily be from Eitech or Polylong though not all the Brackets can be seen. The Bolts look to be crossheaded. And I'm not sure what the part at the very top is.



# STABILUS: S1

[32/941]

# SMALL ADS

[32/941]

**For Sale** Repro parts for the **PRIMUS Motor Chassis**, #161-2,167,210-5,214. Please contact R. Green, 21 Groveland Rd, Speen, Newbury, Berkshire, RG14 1ST; [skyspot46@aol.com](mailto:skyspot46@aol.com).

**For Sale** from the Editor – prices below include postage to UK/Europe & surface anywhere/by air elsewhere:

**Index for OSN 1-30**, 20 A4 sides, £2.30/2.90/3.80.

**MCS Database**, updated edition in 2 parts, 56 A4 sides in all, £6.50/7.00/7.60

**OSN Subscription Rates** The price per Issue, including postage, at Printed Paper Rate where available, is £5.50 for UK; £6.50 by air to Europe & surface anywhere; £7.50 by air outside Europe. **Back Issues** For the zones above : OSN 1: £1/£1.30/£1.50; OSN 2,3: £2.30/£2.70/ £2.90 each; OSN 4-27: £3.60/£4.10/£4.50 each; OSN 28 on (in colour): £6/£7/£8. (All colour & some B&W issues are on loose sheets.)

**Payments** Please make cheques etc payable to P.A.Knowles. Remittances must be in Pounds Sterling (GBP) or, as cash, in Euros or US Dollars (at £1=€1.50= \$1.80). Payments from overseas may also be made using PayPal.

**Small Ads** Short ads are free to subscribers; insertion guaranteed in OSN 33 if received by the end of July (but repeats may not always be possible, please ask).

# OSN – Your Credit Balance:

was after OSN 31  
was after your remittance of

is after this Issue

Please send at least £ if you wish to receive the next Issue.